



SKANSKA

Working on
behalf of

HS2

Notification



Notice of road closure on Breakspear Road South

May 2019 | www.hs2.org.uk

High Speed Two (HS2) is the new high speed railway for Britain. As part of the railway's construction we are continuing preparatory works within Hillingdon.

Upcoming road closure on Breakspear Road South

To safely complete the construction of the new Merck, Sharpe and Dohme access road, along with repositioning and reconnecting utility and service connections a road closure on a section of Breakspear Road South is required.

We recognise road closures affect both the public and the local community and will cause significant impacts on your journey plans and we are committed to completing the work as soon as we can. We have scheduled the work to be completed in three phases, which we explain fully below.

Our team can be contacted 24 hours a day on 08081 434 434.

Closure details

Phase 1 – Full road closure for 27 days, starting Friday 31 May at 6am to Thursday 27 June at 8pm.

Phase 2 - Northbound lane closure for 17 days, starting Thursday 27 June at 8pm to Friday 12 July at 6am.

Phase 3 – Full road closure for 16 days, starting Friday 12 July at 6am to Sunday 28 July at 8pm.

The road will reopen on Monday 29 July 2019.

We encourage all drivers to follow the advised diversion route. The closure will begin north of the Merck, Sharpe and Dohme entrance and end after Gatesmead Farm. Access will be maintained to residential properties at all times.

Advance warning signs will be installed before works commence. Access only signs will be displayed, with operatives present 24 hours a day. To sign up for news alerts please visit www.hs2inhilligdon.co.uk

If you have a question about HS2 or our works, please contact our helpdesk on 08081 434 434 or email HS2enquiries@hs2.org.uk

Duration of works

Phase 1 – Full road closure for 27 days

31 May to 27 June 2019

Phase 2 - Northbound lane closure for 17 days

27 June to 12 July 2019

Phase 3 – Full road closure for 16 days

12 July to 28 July 2019

Working hours

Monday to Sunday

8am to 6pm

What to expect

Disruption to your journey. Road users are advised to plan ahead of their journey. We will maintain access to all residential properties, in the vicinity of our works.

Pedestrian diversion and appropriate signage will be in place throughout

What we will do

In case of any changes to these dates, updates will be available on: hs2inhilligdon.co.uk

Notice of road closure on Breakspear Road South

Notification



www.hs2.org.uk

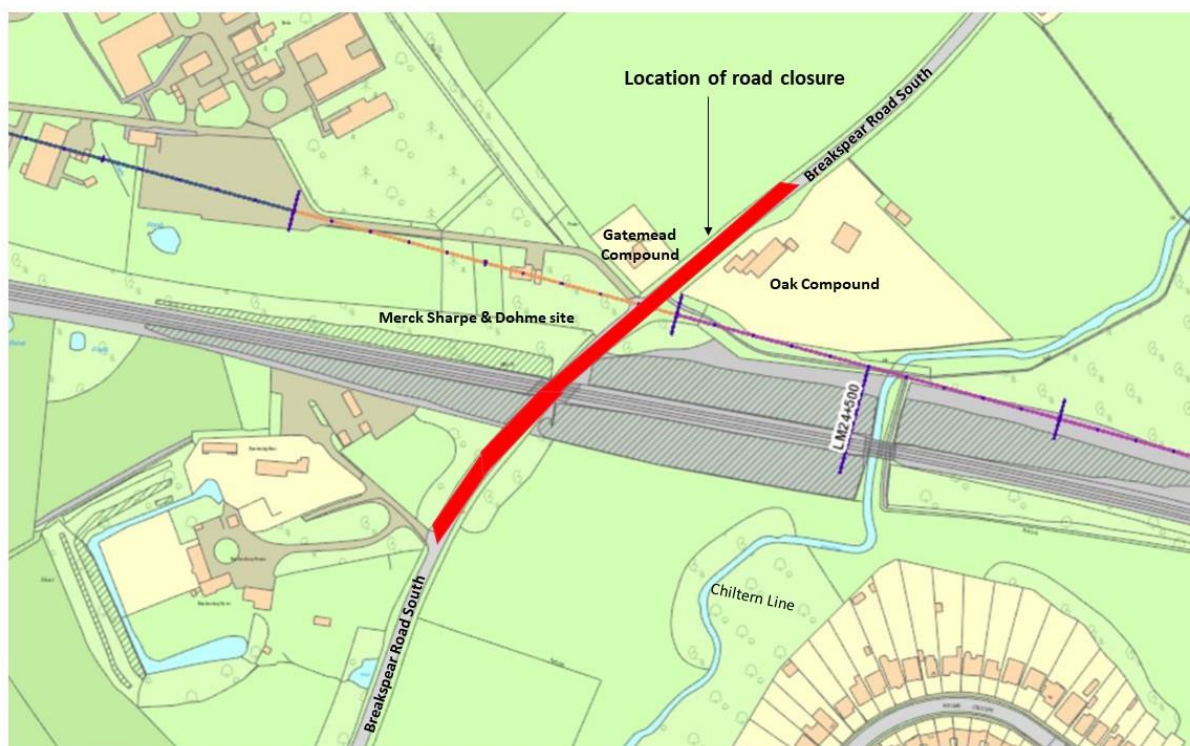
What are we doing?

Due to the size of the excavation required for these works and the narrow nature of Breakspear Road South, the safest and most effective way to deliver these works is by closing the road. Many of the utility and service connections span the full width of the road. The closure will allow us to ensure the safety of the public and our workforce.

The works that we will deliver within this closure period include:

- Construction of the new Merck, Sharpe and Dohme access road junction with Breakspear Road South
- Construction of a new pedestrian crossing to accommodate the bridleway diversion
- Installation of a new telecoms connection
- Installation of new water main connections
- Installation of a new gas connection
- Diversion of high voltage power cable route
- Disconnection of a number of redundant utility supplies

The map below show the location of the road closure on Breakspear Road South



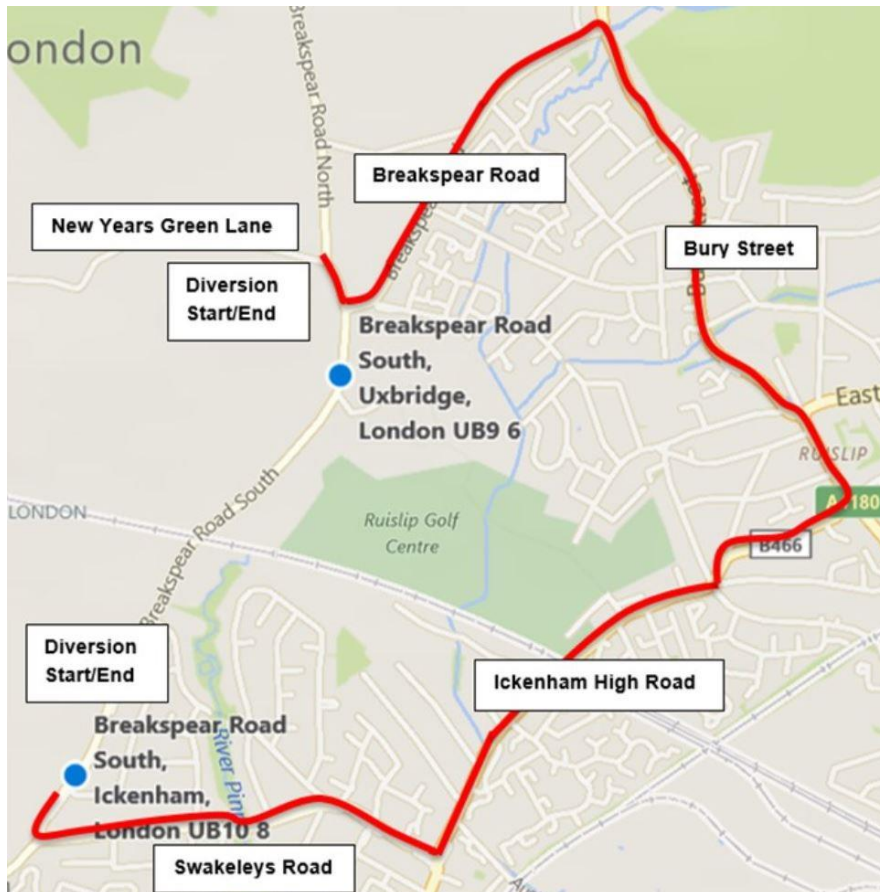
Notice of road closure on Breakspear Road South

Notification



www.hs2.org.uk

The map below details the diversion in place for the road closure on Breakspear Road South



Southbound diversion summary

Vehicles will be diverted down Breakspear Road South onto Breakspear Road. They will then turn right on Bury Street and continue through High Street. Vehicles to turn right onto Ickenham Road and continue through High Road and to then turn right onto Swakeleys Road.

1. Breakspear Road South,
2. Left onto Breakspear Road,
3. Right onto Bury Street,
4. Continue onto High Street,
5. Right onto Ickenham Road,
6. Continue onto High Road,
7. Right onto Swakeleys Road,
8. Left onto Breakspear Road South.

Northbound diversion summary

Vehicles will be diverted from Breakspear Road South down Swakeleys Road, they are then to then turn left onto High Road which will continue into Ickenham Road. Vehicles to then turn left onto High Street and to continue through to Bury Street before turning left onto Breakspear Road.

1. Breakspear Road South,
2. Right onto Swakeleys Road,
3. Left onto High Road,
4. Continue onto Ickenham Road,
5. Left onto High Street,
6. Continue onto Bury Street,
7. Left onto Breakspear Road,
8. Right onto Breakspear Road South.

The map below details the section of the northbound lane closure on Breakspear Road South

The Northbound carriageway will be closed with traffic lights in both directions controlling traffic running on the Southbound carriageway.



You can also speak to our team about the closure of Breakspear Road South at one of the following events:

Our regular drop-in sessions:

Tuesday 21 May between 2pm and 5pm at Ruislip Manor library, Linden Avenue, Ruislip Manor HA4 8TW

Thursday 30 May between 2pm and 5pm at Ickenham library, Long Lane, Ickenham UB10 8RE

Please check hs2inhillington.co.uk for further dates in June and July.

What else is happening in your area?

www.hs2.org.uk

About our Community and Business Funds

We are offering two funds that are available to local communities and businesses between London and the West Midlands, to help with the disruption caused by our construction work. These are the Community and Environment Fund (CEF) and the Business and Local Economy Fund (BLEF).

The CEF is designed to give communities the opportunity to share in the benefits of HS2. It is an allocated fund that communities are able to apply for, to help to support local projects that aim to improve their local area.

The BLEF is designed to support local economies that may be disrupted by the construction of HS2. BLEF grants are for local business support organisations and local authorities to help maintain business activity in local communities.

For more information about each of these funds, including how to apply, please visit: <https://www.groundwork.org.uk/hs2funds>

About our Commonplace websites

The planning and construction of HS2 is a huge operation – it is currently the largest infrastructure project in Europe.

It's important to us that you are kept up to date about the progress of the Project and any work that may impact you or your community. We have a series of community-focused websites where you can find out what is happening in your local area and sign up for updates about our activities.

Our Commonplace sites currently serve Birmingham, Bucks and Oxfordshire, Cheshire, Euston and Camden, Hertfordshire, Hillingdon, Northamptonshire, Old Oak, Solihull, Staffordshire and Warwickshire. More sites are being prepared to serve other areas.

To find your local Commonplace website, visit:
<https://www.hs2inhillingdon.co.uk/>

For further information about Phase 2a and Phase 2b, visit :
<https://www.gov.uk/government/organisations/high-speed-two-limited>



Keeping you informed

We are committed to keeping you informed about work on HS2. This includes ensuring you know what to expect and when to expect it, as well as how we can help.

Residents' Charter and Commissioner

The Residents' Charter is our promise to communicate as clearly as we possibly can with people who live along or near the HS2 route.

www.gov.uk/government/publications/hs2-residents-charter

We also have an independent Residents' Commissioner whose job is to make sure we keep to the promises we make in the Charter and to keep it under constant review. Find reports at: www.gov.uk/government/collections/hs2-ltd-residents-commissioner

You can contact the Commissioner at: residentscommissioner@hs2.org.uk

Construction Commissioner

The Construction Commissioner's role is to mediate and monitor the way in which HS2 Ltd manages and responds to construction complaints. You can contact the Construction Commissioner by emailing: complaints@hs2-cc.org.uk

Property and compensation

You can find out all about HS2 and properties along the line of route by visiting: www.gov.uk/government/collections/hs2-property

Find out if you're eligible for compensation at: www.gov.uk/claim-compensation-if-affected-by-hs2

Holding us to account

If you are unhappy for any reason you can make a complaint via the helpline. For more details on our complaints process, please visit our website: www.hs2.org.uk/how-to-complain

Contact Us

If you have any questions about this notification of works, please get in touch.

 24/7 Freephone **08081 434 434**

 Minicom **08081 456 472**

 Email **HS2enquiries@hs2.org.uk**

Write to:

FREEPOST

HS2 Community Engagement

Website **www.hs2.org.uk**

To keep up to date with what is happening in your local area, visit: **www.hs2inhillington.co.uk**

Please contact us if you'd like a free copy of this document in large print, Braille, audio or easy read. You can also contact us for help and information in a different language.

HS2 Ltd is committed to protecting personal information. If you wish to know more about how we use your personal information please see our Privacy Notice <https://www.gov.uk/government/publications/high-speed-two-ltd-privacy-notice>

High Speed Two (HS2) Limited, registered in England and Wales.

Registered office: Two Snow hill, Snow Hill Queensway, Birmingham B4 6GA.

Company registration number: 06791686. VAT registration number: 181 4312 30.